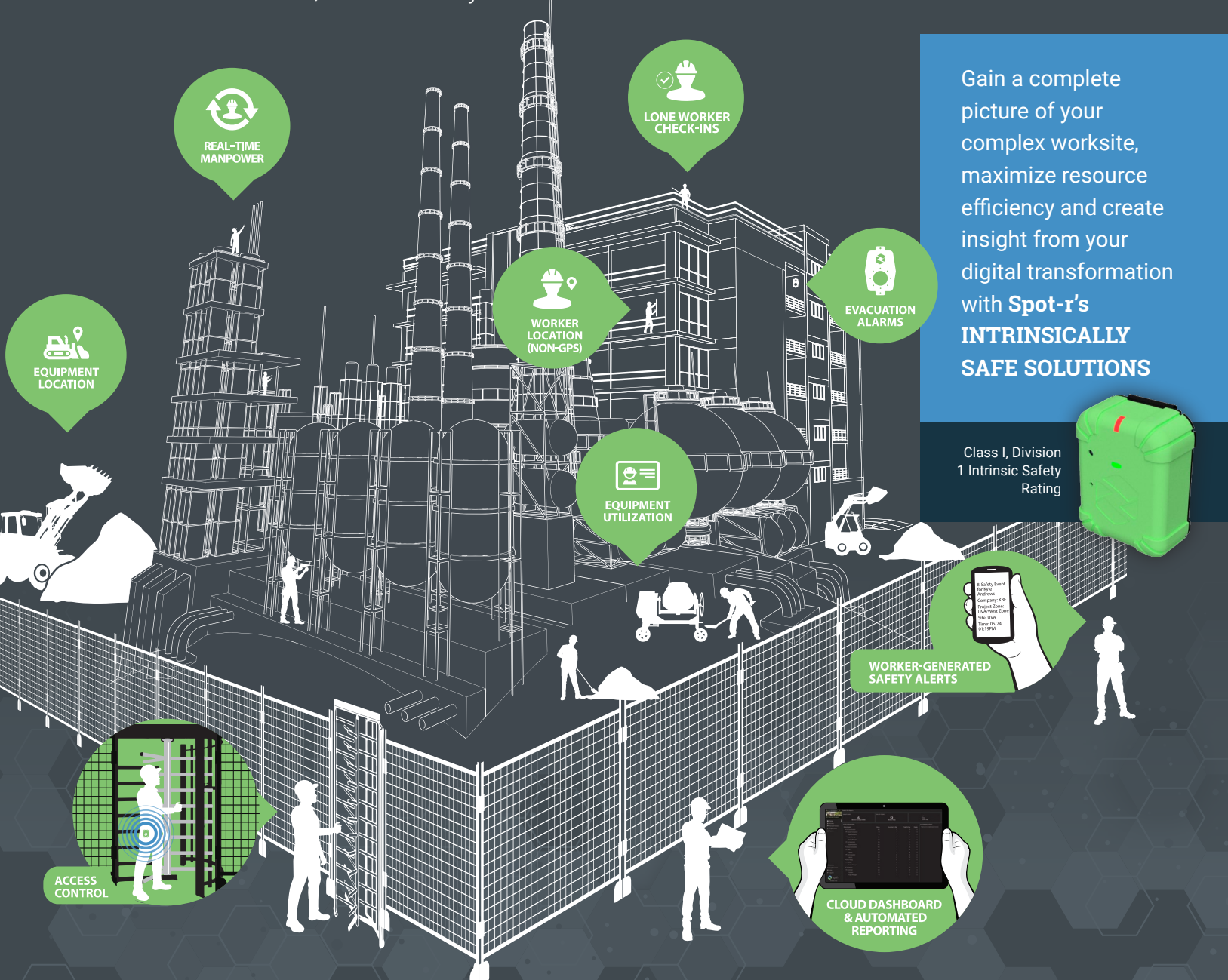




INTRINSICALLY SAFE FOR
ENERGY & INDUSTRIALS

Optimize Your Resources and Workforce Efficiency with Spot-r from Triax Technologies

Typical off-the-shelf network and IoT systems don't cut it at complex Energy & Industrial facilities. The **Spot-r Platform** is different. Our rugged wearable hardware, resilient network technology, and intuitive dashboard enable real-time data capture and transmission in even the most hazardous environments. Automated worker time and attendance, asset utilization and management, lone worker monitoring, and real-time location data improves resource allocation, worker safety and site risk.





spot-r **ADVANTAGE :**

Accelerate Your Digital Transformation with an Intrinsically Safe Tool That Provides Tactical Knowledge from Day 1 and Strategic Insight Over Time



Improved Resource Management Identify which workers are near defined, stationary areas, such as check-in stations, high-value material storage, or confined spaces and whether they're certified to be there. **Spot-r EquipTags** monitor equipment location, utilization and operator identity indoors and outdoors.



Safety at the Push of a Button The **Spot-r Clip** is a critical part of your workforce's PPE, providing a direct line of communication to report injuries, safety incidents and hazards with our push-button functionality.



Smart Evacuation and Muster Managers can trigger an alarm that notifies each worker individually via the **Spot-r Clip** and **EvacTags** of the need to evacuate. Monitor evacuation progress in real-time and automatically identify workers who have arrived at the muster point.



Advanced Analytics Users can build and schedule custom reports, incorporating Spot-r safety and productivity data from one site or many.



Built for the Most Hazardous Environments Spot-r's proprietary, scalable solution keeps even the most challenging physical environments connected - without the need for WiFi or GPS coverage. Our Class I, Division 1 IS solutions can operate in areas where there are ignitable concentrations of flammable gases, flammable liquid-produced vapors, or combustible liquid-produced vapors that exist under normal operating conditions.



Elevate Site Safety and Security With the **Spot-r Clip** serving as a worker's sole badge to get on site, based on specific certifications or time of day, supervisors have a clear record of when someone arrives on site, when they exit and where they're located during the day.



Technical Differentiators:

- Doesn't require GPS or WiFi coverage
- Low power, easily deployable solution
- Class I, Division 1 Intrinsic Safety Rating
- Location data by zone and floor (i.e., horizontal and vertical planes)
- Supports tens of thousands of devices per site
- Closed, localized network means no off-site monitoring
- Open API supports third-party hardware and software integrations



The Next Generation in Site Visibility, Efficiency and Safety is Here.
Visit www.triaxtec.com or contact info@triaxtec.com to learn more.